

Fabricated Steelwork

Overview

As well as providing standard supports like spring hangers, clamps, shoes, u-bolts, etc. QPS also undertakes a wide variety of secondary steelwork fabrication. This could simply be a pedestal to raise a standard support or complicated structures for carrying multiple supports at various heights. This type of work is manufactured from client's specific drawings for unique locations on site.

Materials

All structural steel used is of high quality. QPS offer a wide range of steel including carbon steel, alloy steel, stainless steel and low temperature steels. All steels have mechanical and chemical test certificates and full traceability when requested.

Finishes

All standard surface preparations and finishes are available to steelwork. Shot blasting is carried out to Swedish standard SA 2.5. We offer a large range of painting systems to suit all types of environments.

Quality Assurance

Our fully documented quality management system is accredited to BS EN ISO 9001. This ensures the stringent quality requirements demanded by our clients are met and adhered to in all sectors of our work each and every time.

We maintain full traceability of materials and consumables, with full certification and records of manufacturing, providing document packages for projects on demand.

Key skills are constantly monitored and maintained for our coded welders, NDT Inspection along with qualified in-house welding and painting inspectors.

We also hold full CE Marking accreditation in accordance with EN1090-2.

In our efforts to be the best pipe support company for all your needs, both now and in the future, QPS has decided to go on a journey of continuous improvement both in our health & safety and environmental policy. We believe in a safe environment for our workforce and visitors alike and have a strong commitment to help the community and local suppliers as well as lowering our environmental impact as much as possible.

As such we are pleased to announce that we have acquired BSI certification for ISO 14001 & OHSAS 18001 to add to our already impressive 20+ year history of being certified ISO 9001 and many years of supplying EN 1090 products.

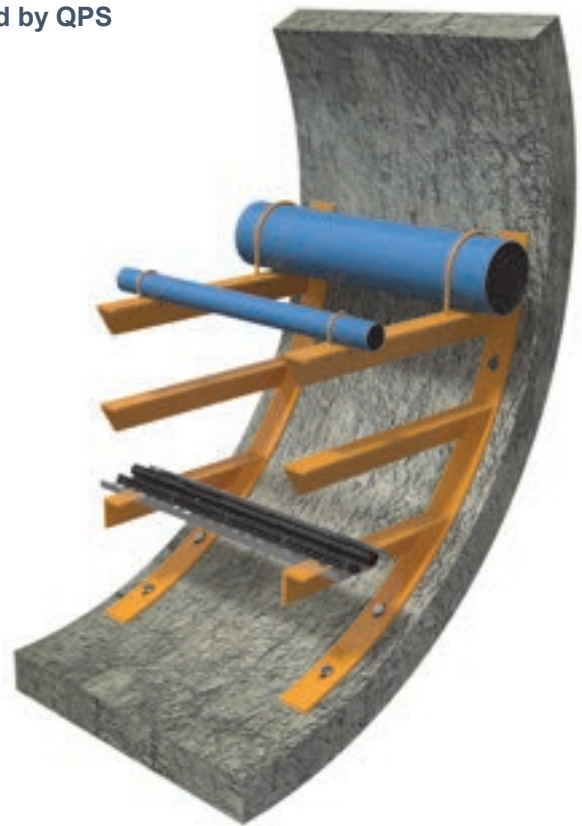
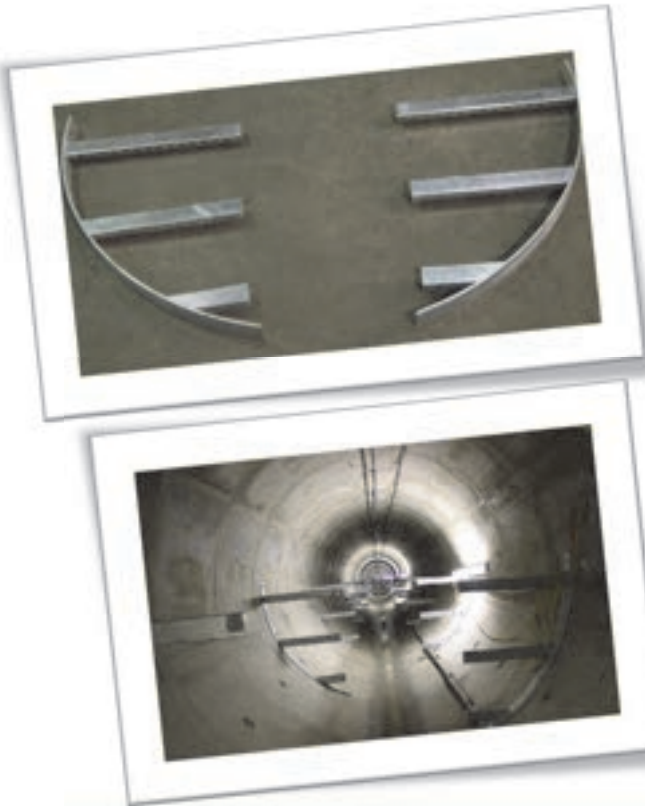
Our standard supports are designed and manufactured in accordance with a number of international standards, including:-

- BSEN 13480-3
- MSS.SP-58
- MSS.SP-69
- ASME B31.1
- ASME B31.3
- ASME BPVC Code Section 3
- RCC-M

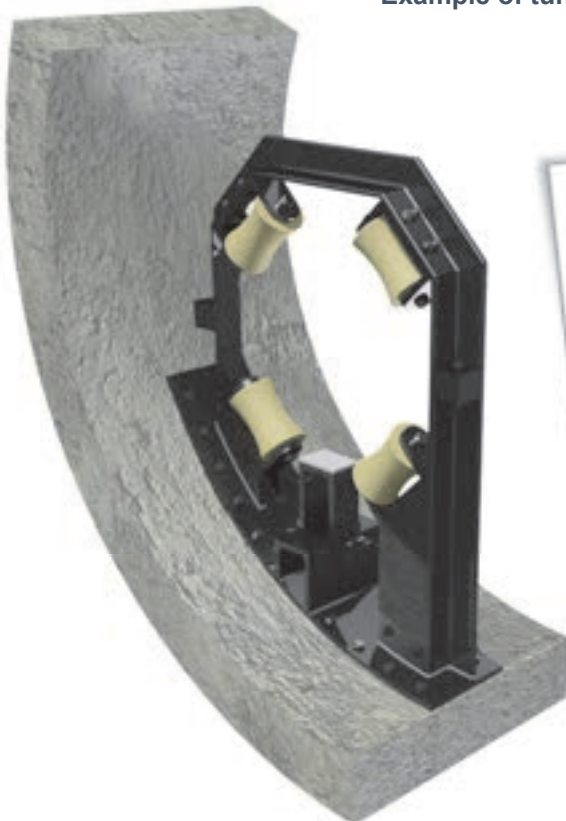


Examples of Fabrication

Example of tunnel wall racking designed & manufactured by QPS

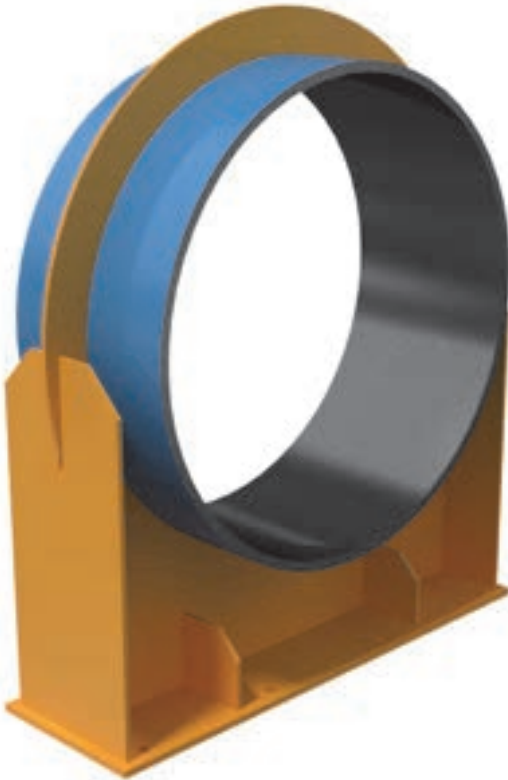


Example of tunnel wall roller guide designed & manufactured by QPS

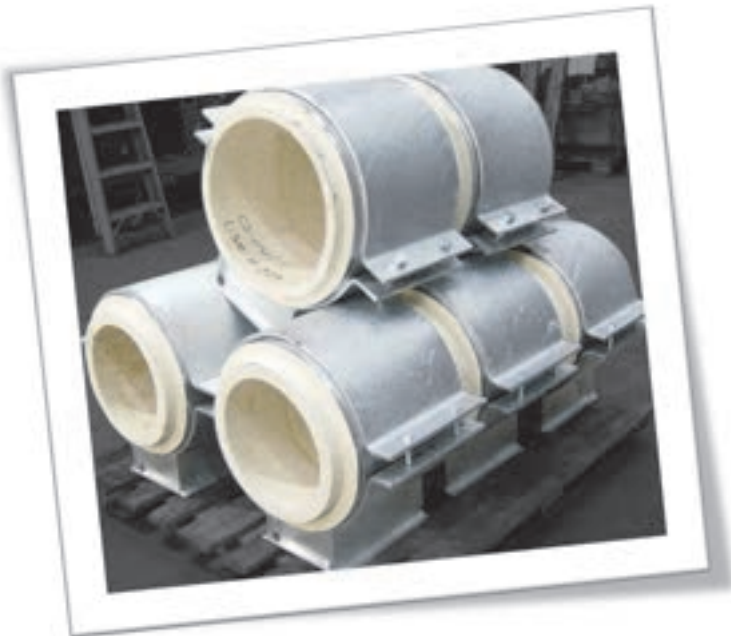


Examples of Fabrication

Example of a Stainless Steel Large Bore Saddle designed & manufactured by QPS

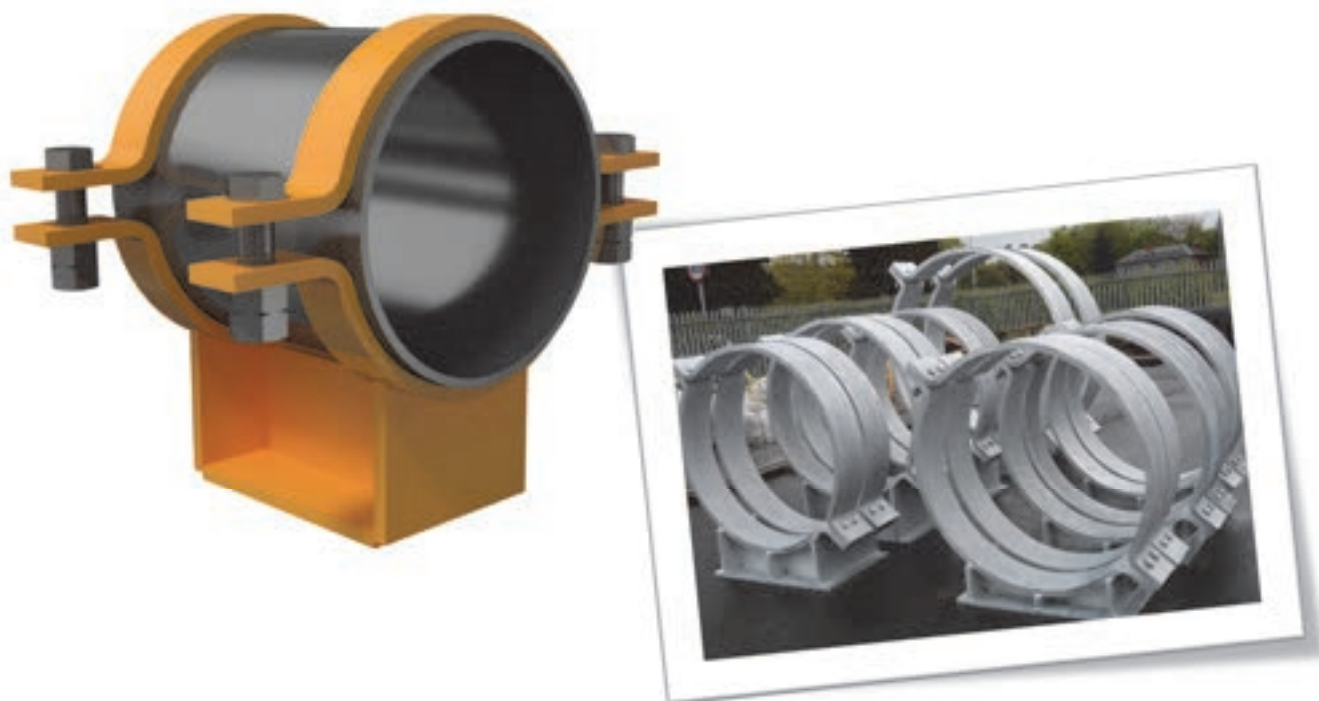


Example of an insulation clamped shoe designed & manufactured by QPS



Examples of Fabrication

Example of Special Large Bore Shoes designed & manufactured by QPS



Example of a Trapeze Beam designed & manufactured by QPS

